



2011
NAGLO ANNUAL
MEETING
ST. LOUIS



A G E N D A

JULY 23 - 27

Conference Information

Temperature—Average normal temperature for the month of July—89°F/69°F

Attire—Business casual for all conference events

Spouses/Guests—Spouses/guests are invited to attend all meals and functions

EVENTS:

Sunday, July 24

12:30 p.m.

Self-Guided Tour of Downtown Landmarks

www.explorestlouis.com

The Arch, Old Courthouse and Old Cathedral are located within walking distance of the hotel.

Please meet in the Hotel Lobby at 12:30 p.m.

5:30 p.m.

Lorenzo's Trattoria

1933 Edwards

St. Louis, MO 63110

www.lorenzostrattoria.com

Located on "The Hill", shuttle service will be provided to Lorenzo's. Please meet in the Hotel Lobby at 5:00 p.m.

Monday, July 25

2:30 p.m.—**Please dress comfortably as we go directly to the Stadium after the Tour**

Anheuser-Busch Brewery Safety Tour

12th & Lynch Sts.

St. Louis, MO 63118

www.budweisertours.com

Shuttle service will be provided. Please meet in the Hotel Lobby at 2:00 p.m.

6:30 p.m.

Busch Stadium

700 Clark Street

St. Louis, MO 63102

www.stlcardinals.com

Cardinals v. Astros - Reserved Suite with full Buffet for Dinner

Tuesday, July 26

Spouse/Guest Activity

Forest Park

Enjoy a day at one of St. Louis' most treasured resources. Visit the Art Museum, Science Center, Zoo, Jewel Box greenhouse, History Museum, The Muny theatre, 7.5-mile biking, jogging and skating path, skating rink and lakes.

www.stlouis.missouri.org/citygov/parks/forestpark

Shuttle service will be provided. Please meet in the Hotel Lobby at 9:30 a.m.

5:30 p.m.

Missouri Botanical Garden

4344 Shaw Boulevard

St. Louis, MO 63110

www.mobot.org

Shuttle service will be provided. Please meet in the Hotel Lobby at 5:00 p.m.



**JEREMIAH W. (JAY)
NIXON**
GOVERNOR

MISSOURI DEPARTMENT OF LABOR AND INDUSTRIAL RELATIONS

421 EAST DUNKLIN STREET
P.O. BOX 504
JEFFERSON CITY, MO 65102-0504

PHONE: 573-751-4091 FAX: 573-751-4135
www.labor.mo.gov E-mail: diroffice@labor.mo.gov

LAWRENCE G. REBMAN
DEPARTMENT DIRECTOR

July 24, 2011

Attendees:



Welcome! I am thrilled to have you join us for this year's conference in St. Louis, Missouri, "the Gateway to the West". Founded in 1764, St. Louis is a beautiful city that has a unique history of having been governed under French, Spanish and American flags. During your visit, I hope you will explore the city's impressive architecture, Zoo, world class art and award winning athletics.

We have an exciting agenda prepared with programs designed to improve government, foster innovation and expand labor relations across the United States, North America and the world.

Thank you for attending and I hope you enjoy your time in St. Louis. If I may be of assistance, please do not hesitate to ask.

Sincerely,

LAWRENCE G. REBMAN
Director



MISSION

NAGLO is a professional association consisting of the chief official in each state and territory of the United States responsible for overseeing the laws that protect and serve working men and women throughout the nation. We strive to assist each member of the Association in the following ways:

By assisting members to develop a clear understanding of the issues they face on a daily basis, both in terms of sharing new approaches to common problems and by keeping members abreast of developments in Washington and the states;

By providing knowledge which will allow members to be better managers and leaders within their agencies;

By helping members establish a nationwide network of contacts with their peers to facilitate in the exchange of information; and,

By representing the views of state officials on important workforce issues, when the opportunity arises, in Washington.



HISTORY

The National Association of Governmental Labor Officials (NAGLO) has been active since the early 1900's. There have been dramatic changes related to workers and the workplace in that time. It is incumbent upon NAGLO to periodically review its mission and goals, in light of the perpetually changing atmosphere in which the members of NAGLO work.

With an over eighty year history, NAGLO has become a leader in offering services and information to member states to improve the protection of working men and women. NAGLO is a bi-partisan association of the Commissioners, Directors, and Secretaries of Labor for each state and territory of the United States. It is open to all states, US Territories, the federal government, the District of Columbia and the Commonwealth of Puerto Rico.

Originally developed as an outgrowth of the Industrial Revolution, the Association of the early 20th century was focused primarily on insuring the safety of factories and on the compilation of labor statistics. As time has moved on, however, NAGLO reflected a change in society and began to focus on domestic issues ranging from workplace safety, to employment security, to wage & hour issues.

These days, not all states have entities that are solely responsible for oversight of traditional Labor issues. Some states have expanded their Departments of Labor to focus on other issues ranging from workforce development and training to safety inspections of elevators and carnival rides.

Just as Labor Departments have evolved, so have the responsibilities of the Departments that fall under the jurisdiction of NAGLO members. In general, most members of NAGLO are the gubernatorial appointee in their respective state with regulatory and enforcement authority over:

- The Unemployment Insurance system, and/or,
- The Workers Compensation system, and/or,
- The Workforce Development/Job Training programs in their respective states, and/or;
- Wage & Hour issues, such as setting the state's minimum wage, insuring that employees receive the compensation guaranteed to them under state and federal statutes, and insuring that employers comply with federal statutes such as the Family and Medical Leave Act, and/or,
- The state's Welfare-to-Work plan.

A number of the members also have regulatory and enforcement authority over state OSH programs, state inspection programs (elevators, carnival rides, etc.), and child labor programs.

NAGLO has developed into an organization that seeks to provide information to its membership on a wide variety of issues. Not all members are responsible for all of the issues covered at conferences, meetings, and newsletters, which makes the information dissemination process a challenge. Regardless, NAGLO strives to keep its membership up-to-date through timely reporting of events on Capitol Hill and by sharing information on applicable programs in each state from which other members may learn new ideas or approaches to common problems.

NAGLO is a Federal Stakeholder and regularly participates in US DOL conferences in order to provide the state's viewpoint on federal programs. NAGLO is also a co-founder of the National Apprenticeship Program (NAP) Board with the National Association of State & Territorial Apprenticeship Directors (NASTAD).



EXECUTIVE BOARD FY2011

President - Lori A. Torres

Commissioner
Indiana Department of Labor
402 W. Washington Street
Room W195
Indianapolis, IN 46204
(317) 234-3851
FAX: (317) 974-2001
E-Mail: ltorres@dol.in.gov
Website: www.in.gov/labor

1st Vice President—Lawrence (Larry) G. Rebman

Director
Missouri Department of Labor & Industrial Relations
Post Office Box 504
Jefferson City, MO 65102
(573) 751-4091
FAX: (573) 751-4135
E-Mail: larry.rebman@labor.mo.gov
Website: www.dolir.mo.gov

2nd Vice President - Brad Avakian

Commissioner
Oregon Bureau of Labor & Industries
800 NE Oregon Street, Suite 1045
Portland, OR 97232
(971) 673-0781
FAX: (971) 673-0762
E-Mail: brad.avakian@state.or.us

Secretary/Treasurer - Paul J. Welch

Director, Safety Engineering
Georgia Department of Labor
1700 Century Circle, Suite 100
Atlanta, GA 30345
(404) 679-0690
FAX: (404) 982-3405
E-Mail: paul.welch@dol.state.ga.us
Website: www.dol.state.ga.us

Secretariat - Jeannine Konieczny

NAGLO
Post Office Box 29609
Atlanta, GA 30349
(404) 679-1795
FAX: (678) 222-7733
E-Mail: jeannine.konieczny@dol.state.ga.us
Website: www.naglo.org

Eastern Region

Representing: Connecticut, Delaware, District of Columbia, Maine, Maryland, Massachusetts, New Hampshire, New Jersey, New York, Pennsylvania, Rhode Island, Vermont, West Virginia

Joanne F. Goldstein, Secretary

Massachusetts Executive Office of Labor & Workforce Development (EOLWD)
One Ashburton Place, Suite 2112
Boston, MA 02108
(617) 626-7122
FAX: (617) 727-1090
E-Mail: joanne.goldstein@state.ma.us
Website: www.mass.gov/dol

Mid-Western Region

Representing: Illinois, Indiana, Iowa, Kansas, Michigan, Minnesota, Missouri, Nebraska, North Dakota, Ohio, South Dakota, Wisconsin

Vacant

Southern Region

Representing: Alabama, Arkansas, Florida, Georgia, Kentucky, Louisiana, Mississippi, North Carolina, Oklahoma, Puerto Rico, South Carolina, Tennessee, Texas, U.S. Virgin Islands, Virginia

Courtney Malveaux, Commissioner

Virginia Department of Labor & Industry
Powers-Taylor Building, 13 South Thirteenth Street
Richmond, VA 23219
(804) 371-2327
FAX: (804) 371-6524
E-Mail: courtney.malveaux@doli.virginia.gov
Website: www.doli.virginia.gov

Western Region

Representing: Alaska, American Samoa, Arizona, California, Colorado, Guam, Hawaii, Idaho, Montana, Nevada, New Mexico, Oregon, Utah, Washington, Wyoming

Sherrie Hayashi, Commissioner

Utah Labor Commission
160 E. 300 S.
Salt Lake City, UT 84101
(801) 530-6800
FAX:
E-Mail: shayashi@utah.gov
Website: laborcommission.utah.gov

Sunday, July 24, 2011

12:30 p.m. Self Guided Tour of Downtown Landmarks
Meet in Hotel Lobby at 12:30 p.m.



Gateway Arch-Jefferson National Expansion Memorial

The Gateway Arch Riverfront, highlighted by the majestic Gateway Arch, attracts more than four million guests each year. At 630 ft., our nation's tallest man-made monument has plenty of exciting activities. Take the tram ride to the top, see a documentary film, experience a giant screen movie, visit the Museum of Westward Expansion and go shopping.

Historic Old Courthouse

Scene of the Dred Scott trials. Galleries depict the history of St. Louis from its French and Spanish roots to its role in westward expansion. Trial reenactments, ranger tours.

Basilica of St. Louis, King (Old Cathedral)

The first Catholic Church in St. Louis built on this site, was a small log house built in 1770. St. Louis IX, King of France, is the Patron Saint of the City and of the Church. In 1776, the mission of St. Louis became a canonical parish and the second log cabin church was built. The cornerstone of the present Cathedral building was laid in 1831 and the dedication of the building took place in 1834. This was the first Cathedral west of the Mississippi and until 1845 it was the only parish church in the city of St. Louis. It is truly the "Mother Church" of the city of St. Louis.

3:00 p.m. Registration

North Mezzanine Foyer

5:30 p.m. Cocktails/Dinner

Lorenzo's Trattoria

In 1999, a young chef, Larry Fuse, Jr. saw an opportunity to bring something new and different to the old ways of Italy. Located on "The Hill", Lorenzo's Trattoria offers an alternative to the traditional.



Lorenzo's features Northern Italian cuisine with a touch of contemporary flavor. The menu at Lorenzo's presents a wide variety of pastas and entrees. Look forward to experiencing the authentic house-made gnocchi and risottos. The entrees include our signature dish, braised ossobuco and our guests' ever favorite, Chicken Spedini. Lorenzo's is a departure from the typical white napkin establishment.

Monday, July 25, 2011

- 7:00 a.m. Registration North Mezzanine Foyer**
- 7:30 a.m. Breakfast Parkview/Aubert**
- 8:30 a.m. Welcome and Introductions Portland/Benton**
Lawrence Rebman
Director, Missouri Department of Labor & Industrial Relations
- Lori Torres, President of NAGLO
Commissioner, Indiana Department of Labor
- 9:00 a.m. Innovative Economic Development With Micro Lending Portland/Benton**
- Panel Moderator:
Paul Wenske, Sr. Community Affairs Advisor
Federal Reserve
- Panelists:
Maria Meyers, Director
UMKC Innovation Center
- Robert F. Boyle, CEO
Justine PETERSEN
- Rose Jaspersen
Nebraska Enterprise Fund
- Daniel Davis, Community Development Specialist
Federal Reserve Bank of St. Louis
- 10:45 a.m. Break**
- 11:00 a.m. Immigration & E-Verify Updates Portland/Benton**
Yvette LaGonterie, Chief, Outreach
Verification Division
United States Citizenship & Immigration Services
Department of Homeland Security
- 12:00 noon Lunch Parkview/Aubert**
The Labor Commissioner's Role in Alaska's
Economic & Employment Recovery
Clark "Click" Bishop, Alaska Labor Commissioner
Appointed by Governors Sarah Palin and Sean Parnell
- 2:30 p.m. Off-site: Anheuser-Busch Brewery Safety Tour**
- 6:30 p.m. Cardinals v. Astros Baseball Game/Dinner Busch Stadium**

Tuesday, July 26, 2011

- 7:30 a.m. Breakfast Parkview/Aubert**
- 8:30 a.m. Wicked or Wise? Portland/Benton**
Restrictions on Collective Bargaining for Public Employees
Commissioner Roundtable
- 10:30 a.m. Break**
- 10:45 a.m. State Roundtable on Employee Misclassification Portland/Benton**
National Update on State Efforts at Misclassification
- 12:00 noon Lunch Parkview/Aubert**
Labor Representatives from Canada and Taiwan
- 1:45 p.m. 21st Century Apprenticeship Portland/Benton**
Steve Simms, Apprenticeship Administrator
Oregon Department of Labor
- Jeff Beeson, Director, Apprenticeship & Training**
Maryland Department of Labor
- John Ladd, Director, Office of Apprenticeship**
US DOL
- 3:15 p.m. Break**
- 3:30 p.m. OSHA Funding for 2012— Portland/Benton**
Appropriations Process 101 &
Other Labor Issues at the Federal Level
Jerry M. Hunter, Partner, Bryan Cave LLP
Matthew C. Jessee, Policy Advisor, Bryan Cave LLP
- 5:30 p.m. President's Dinner Missouri Botanical Garden**
Spink Pavilion

Wednesday, July 27, 2011

7:30 a.m.	Breakfast	Parkview/Aubert
8:30 a.m.	Voluntary State Reports of Best Practices & Innovative Ideas to Share	Portland/Benton
10:30 a.m.	Business Meeting	Portland/Benton
11:30 a.m.	Adjourn	

Have a Safe Trip Home

President's Dinner

Tuesday, July 26, 2011

5:30 p.m.

Meet in hotel lobby at 5:00 p.m.



MISSOURI BOTANICAL GARDEN

The Missouri Botanical Garden was founded in 1859 by Henry Shaw and was, from its inception, a public botanical garden and a place to study and display plants.

Within the walls of the 79 acres, magnificent gardens and rare collections of botanical, horticultural, and historical materials reside with architecturally significant buildings and inspirational fountains and statuary. Today, the Garden is a National Historic Landmark, the oldest botanical garden in the United States, and a world leader in botanical research.

The grounds of the Missouri Botanical Garden feature gardens, modern and traditional, and living collections of major groups of ornamental and practical plants. Greenhouses and conservatories display plants native to lands far removed from St. Louis.



150 years after opening, local parlance still refers to "Shaw's Garden." Shaw's gift to the city of St. Louis is as memorable today as it was in 1859.



Spouse/Guest Activity



In 1986, Forest Park Forever, a private, not-for-profit organization, was founded to work in partnership with the St. Louis Department of Parks, Recreation and Forestry to restore, maintain and sustain Forest Park as one of America's great urban public parks for the enjoyment of all - now and forever.



Tuesday, July 26, 2011

Meet in hotel lobby at 8:15 a.m.



One of the largest urban parks in the United States, at 1,371 acres, it is approximately 500 acres larger than Central Park in New York City. In 1904, the Louisiana Purchase Exposition, the greatest of the World's Fairs, drew more than 19 million visitors from around the world. Forest Park is home to the Art Museum, Science Center, Zoo, Jewel Box greenhouse, History Museum, The Muny theatre, 7.5 -mile biking, jogging and skating path, skating rink and lakes.

When Forest Park officially opened to the public on Saturday afternoon, June 24, 1876, it was located in St. Louis County, almost two miles west of the St. Louis City limits and a 40 minute carriage ride from downtown.

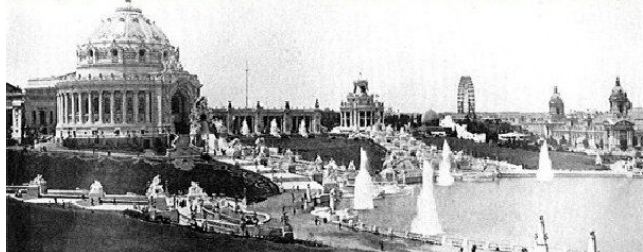
The St. Louis Amateur Athletic Association was formed in 1897. The 1885 plan for the park recommended building a zoo. In 1881, the city's first art museum opened in downtown, operated by a department of Washington University. In early 1897, its board asked the city's permission to build an art museum in Forest Park.

The movement to celebrate the centennial of the Louisiana Purchase began in 1989 and gathered momentum under the direction of David R. Francis, former governor. Forest Park was chosen for the fair but its use was made with the condition that after the close of the exposition, the area would revert to a park setting.

The City of St. Louis appropriated \$5 million for the fair and that was matched by public subscription and another \$5 million from the U. S. Congress. Construction work began in 1901 and the fair was scheduled to open in 1903. But, as the fair grew in size and scope, it was agreed that it would open in 1904.

1904 World's Fair in Forest Park

The Twentieth Century was born in Forest Park with the grandeur and spectacle of the Louisiana Purchase Exhibition—The World's Fair of 1904. From April 30 through December 1, 1904, more than 20 million people went to the fair, an average of more than 100,000 each day.





**National Association of Governmental Labor Officials
Post Office Box 29605
Atlanta, GA 30359**

**404/679-1795
FAX: 678/222-7733**

www.naglo.org